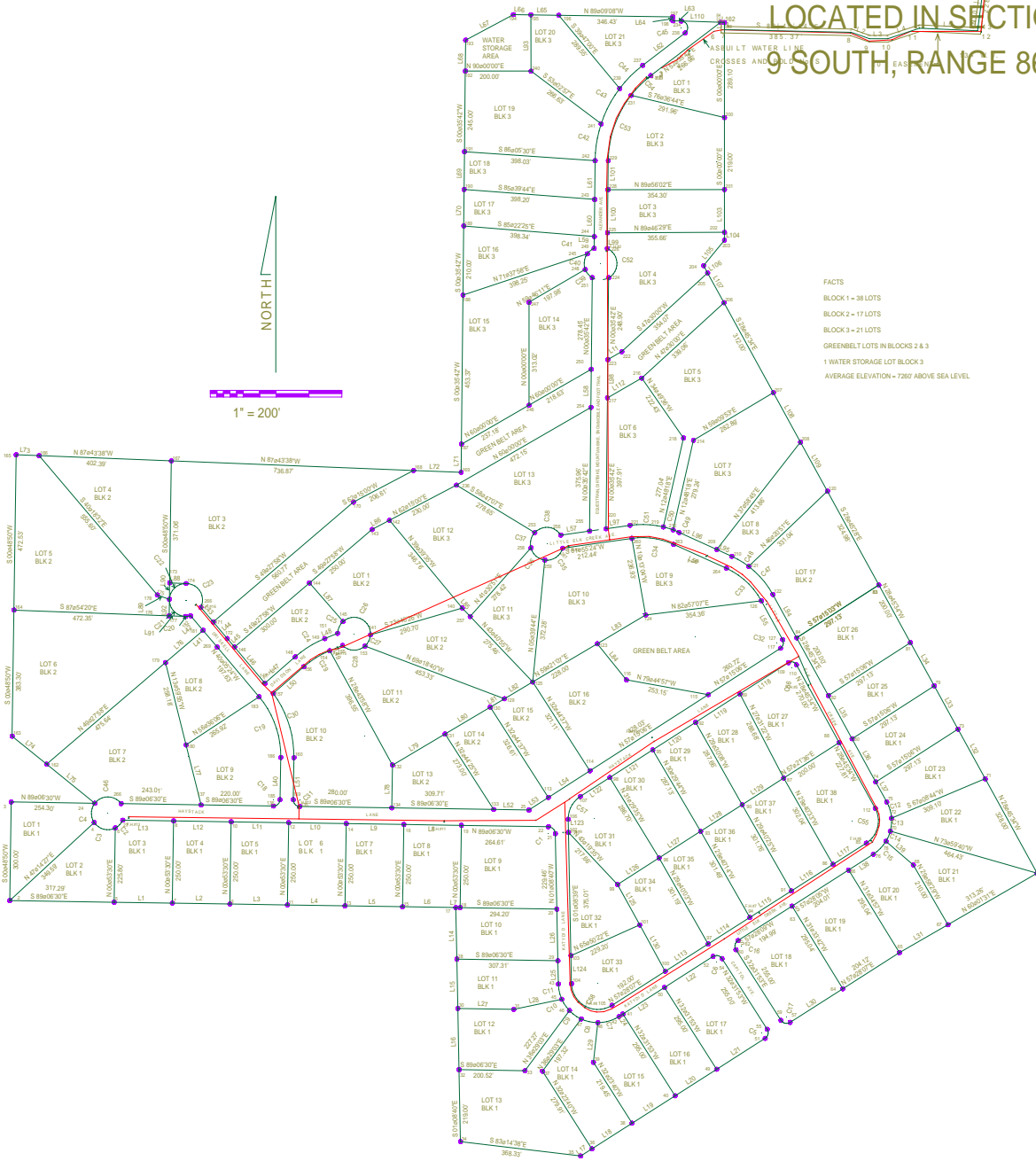


LITTLE ELK CREEK SUBDIVISION BLOCKS 1, 2 & 3 TOWN OF SNOWMASS, PITKIN COUNTY, COLORADO

LOCATED IN SECTIONS 4 AND 5 OF TOWNSHIP 9 SOUTH, RANGE 86 WEST OF THE 6TH P.M.



FACTS
 BLOCK 1 - 38 LOTS
 BLOCK 2 - 17 LOTS
 BLOCK 3 - 21 LOTS
 GREENBELT LOTS IN BLOCKS 2 & 3
 1 WATER STORAGE LOT BLOCK 3
 AVERAGE ELEVATION = 7267' ABOVE SEA LEVEL

CURVE	DELTA	ANGLE	RADIUS
C1	87°07'50"	21.45'	32.93'
C2	38°32'14"	48.99'	33.63'
C3	82°52'48"	50.01'	72.33'
C4	71°52'37"	50.01'	62.73'
C5	90°00'00"	20.00'	31.42'
C6	90°00'00"	20.00'	31.42'
C7	32°31'41"	120.00'	68.13'
C8	25°00'10"	120.00'	52.37'
C9	20°59'43"	120.01'	43.98'
C10	25°00'00"	120.01'	41.95'
C11	22°51'12"	120.00'	47.86'
C12	24°45'37"	119.99'	51.85'
C13	19°00'00"	119.99'	39.79'
C14	15°00'00"	120.00'	33.49'
C15	28°57'52"	120.01'	55.43'
C16	90°00'00"	20.00'	31.42'
C17	90°00'00"	20.00'	31.42'
C18	90°00'00"	20.00'	31.42'
C19	40°58'34"	280.00'	200.25'
C20	17°45'42"	50.00'	15.63'
C21	91°16'52"	50.00'	79.66'
C22	88°43'12"	60.00'	72.42'
C23	117°10'43"	50.00'	102.26'
C24	19°03'42"	320.00'	106.46'
C25	45°59'42"	48.99'	41.00'
C26	135°15'04"	50.00'	118.02'
C27	44°42'27"	50.01'	38.99'
C28	85°56'38"	50.01'	75.01'
C29	15°03'37"	280.01'	83.10'
C30	37°02'22"	320.01'	208.83'
C31	90°00'00"	20.00'	31.42'
C32	88°40'42"	20.00'	30.03'
C33	36°05'07"	230.00'	147.91'
C34	32°06'44"	230.00'	130.38'
C35	81°42'15"	50.00'	71.01'
C36	68°44'02"	50.00'	58.98'
C37	57°18'37"	60.00'	50.01'
C38	105°42'17"	90.00'	92.02'
C39	38°11'57"	50.00'	33.34'
C40	57°18'15"	50.00'	50.01'
C41	28°56'07"	50.00'	27.95'
C42	17°57'28"	370.00'	113.81'
C43	18°53'24"	370.01'	121.99'
C44	15°29'14"	370.01'	100.01'
C45	102°47'10"	20.00'	48.14'
C46	105°15'41"	50.01'	92.72'
C47	24°05'16"	270.00'	113.51'
C48	12°40'00"	270.00'	60.09'
C49	94°14'47"	270.00'	20.01'
C50	08°58'00"	270.00'	31.03'
C51	21°39'17"	270.01'	102.04'
C52	126°19'54"	50.00'	110.11'
C53	37°43'28"	330.00'	234.51'
C54	14°45'52"	330.01'	85.00'
C55	85°12'45"	80.01'	120.39'
C56	53°52'27"	17.31'	28.39'
C57	58°58'44"	80.00'	81.58'
C58	121°42'22"	80.00'	168.46'